

**Head Office:**  
Dixon Kelley Estate Agents  
1 Penn Court  
Station Road, West Moors  
Dorset. BH22 0JJ

# DORSET PARK HOMES

**DRAFT**

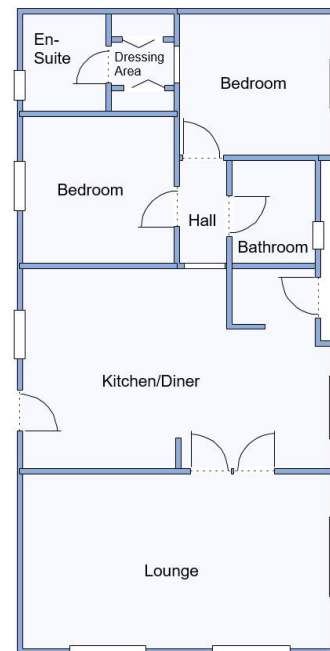
[www.dorsetparkhomes.com](http://www.dorsetparkhomes.com)

**Telephone: 01202 877511**

**33 Woodlands Park, Stopples Lane, Hordle, New Milton. SO41 0JB**



**New Omar Image Park Home—Fully Furnished!**



This drawing has been prepared for diagrammatic purpose only. Not to scale.

## 2-Bedroom Park Home - approx 40' x 20'

Accommodation & approximate room dimensions:

- Entrance Hall
- Kitchen/Diner: approx 18'9" x 12'3". Range of floor and wall cupboards. Built-in oven & hob with extractor fan over. Integrated fridge/freezer & dishwasher & washing machine.
- Lounge: approx 18'9" x 10'9". Feature fireplace
- Bedroom: approx 9'4" x 8'8" Plus Dressing Area with fitted wardrobes.
- En-Suite Shower Room
- Bedroom 2: approx 9'1" x 9'1". Fitted wardrobe.
- Bathroom: Panelled bath, wash basin & WC.
- Gas Central Heating & PVCu Double-Glazing
- Stylish Interior Design & Fully Furnished
- Parking on Plot & Patio Garden
- Age Restriction 50+
- Pets Considered
- Well maintained Residential Park near to local amenities, outstanding coastline and the New Forest National Park.

## 'Pet Friendly' Park



Kitchen/Diner



Kitchen/Diner



Lounge



En-Suite Shower Room

**Price: £274,950**

**Pitch Fee: approx £295.37 pcm**

**Subject to Annual Review**

**Council Tax Band: 'A'**

**Tenure: 1983 Mobile Homes Act Agreement**

**VIEWING STRICTLY BY APPOINTMENT WITH THE VENDOR'S AGENT Dorset Park Homes 01202 877511**

**IMPORTANT NOTE:** These particulars are believed to be correct but their accuracy is not guaranteed. They do not form part of any contract. Nothing in these particulars shall be deemed to be a statement that the property is in good structural condition or otherwise, nor that any of the services, appliances, equipment or facilities are in good working order or have been tested. Purchasers should satisfy themselves on such matters prior to purchase Ref.W04684

*The recommended specialist in Park Home sales*  
Partner: Simon Dixon

